

The Worlds Tallest Straw Building



25.3.2026 - Uudenmaan Liitto & Business Helsinki

Anna Hjelt





Building a Sustainable Future in Sweden

The focus is on:

- » Bio-based materials
 - » Lower climate impact
 - » High social sustainability
-
- » Founded in 2019 – part of ETC Group
 - » HQ in Stockholm; operations through assembly factory in Hultsfred
 - » Revenue: 5,8 M€ (2024)



Hyllie, Malmö, SWE

Size: 10 + 2 storeys, 52 apartments

Height: 38 m

Size: 4996 m²

Architect: Kaminsky Architects,

Developer: ETC Bygg

Year: 2024- opening 05/26

Concept, design and execution focus on the environment and people.

- > Bio-based materials + other innovations
- > Energy production and storage
- > Low energy consumption to provide long-term sustainability

- > Rental accommodation to young and old alike
- > Well being in and out and recreation

- > Crowdfunded via subscribers of the ETC newspaper

Standard costs to build an apartment in Sweden: 2,800- 3,000€/m²

Costs to build in Hyllie project: approx 3 065€/m²



Visualisation: ETC Bygg

- » Foundation: concrete, fly ash and basalt
- » Frame: Pilar beam
- » CLT elevator shafts, staircase, divider floors and walls
- » Exterior walls: EcoCocon Straw Elements 300mm





EcoCocon Straw Panel: Environmental Impact

1. Renewable, Local, Byproduct Biomass

- » Local surplus straw + minimal wood
- » 98% natural, renewable, untreated

2. Carbon Storage

- » Sequestering 31.5 kg C/m² (115 kg CO₂/m²), captured through growths' photosynthesis

3. Low Emission and Zero Waste

- » 2,8kg CO₂/m² emitted in production
- » Produced with minimal energy, no water

4. Designed for circularity

- » Digital passport
- » Designed for disassembly
- » Designed for materials' separation

Ecococon EPD (EN15804+A2) declared unit 1 m²

GWP-total A1-A3 - 101 kgCO₂e Building material production

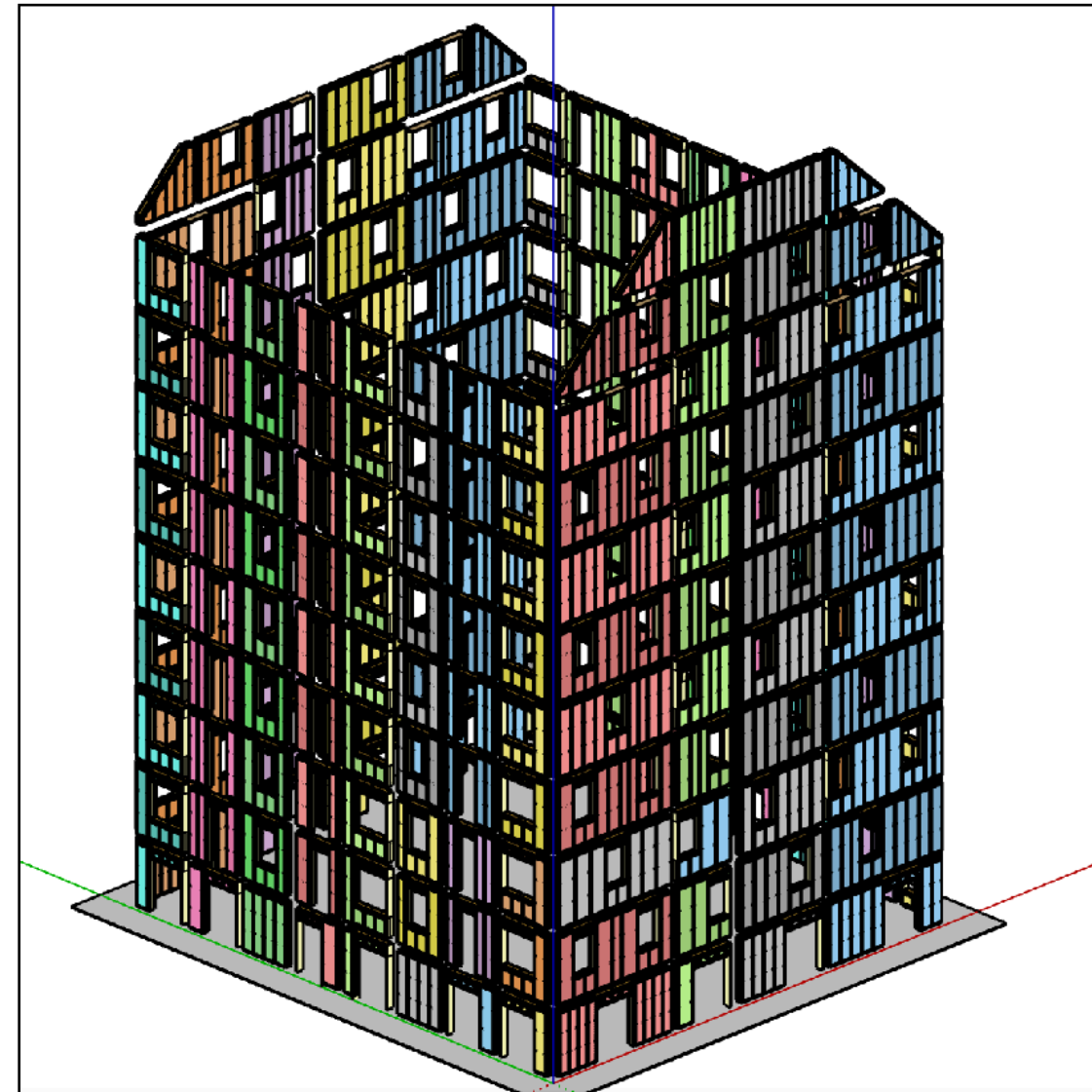
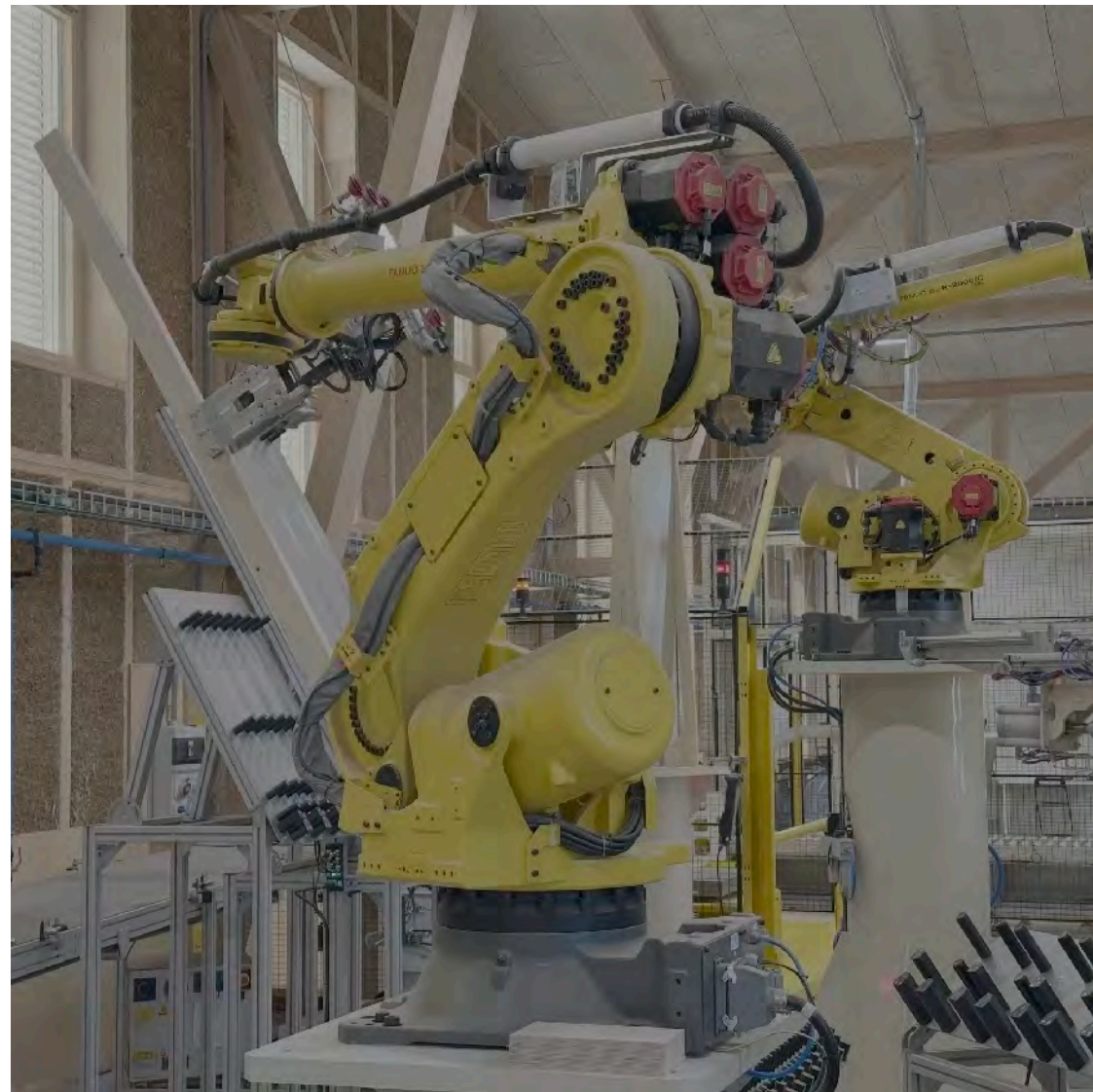
GWP-total C3 112 kgCO₂e Waste management

GWP-total C4 6,16 kgCO₂e Disposal of end waste

GWP-biogenic A1-A3 -119 kgCO₂e Building material production



Designed by precision and ready for circularity



Opportunity name can be long 

B01-02
800 x 2150 x 300 mm

Floor: 01 - Southwest

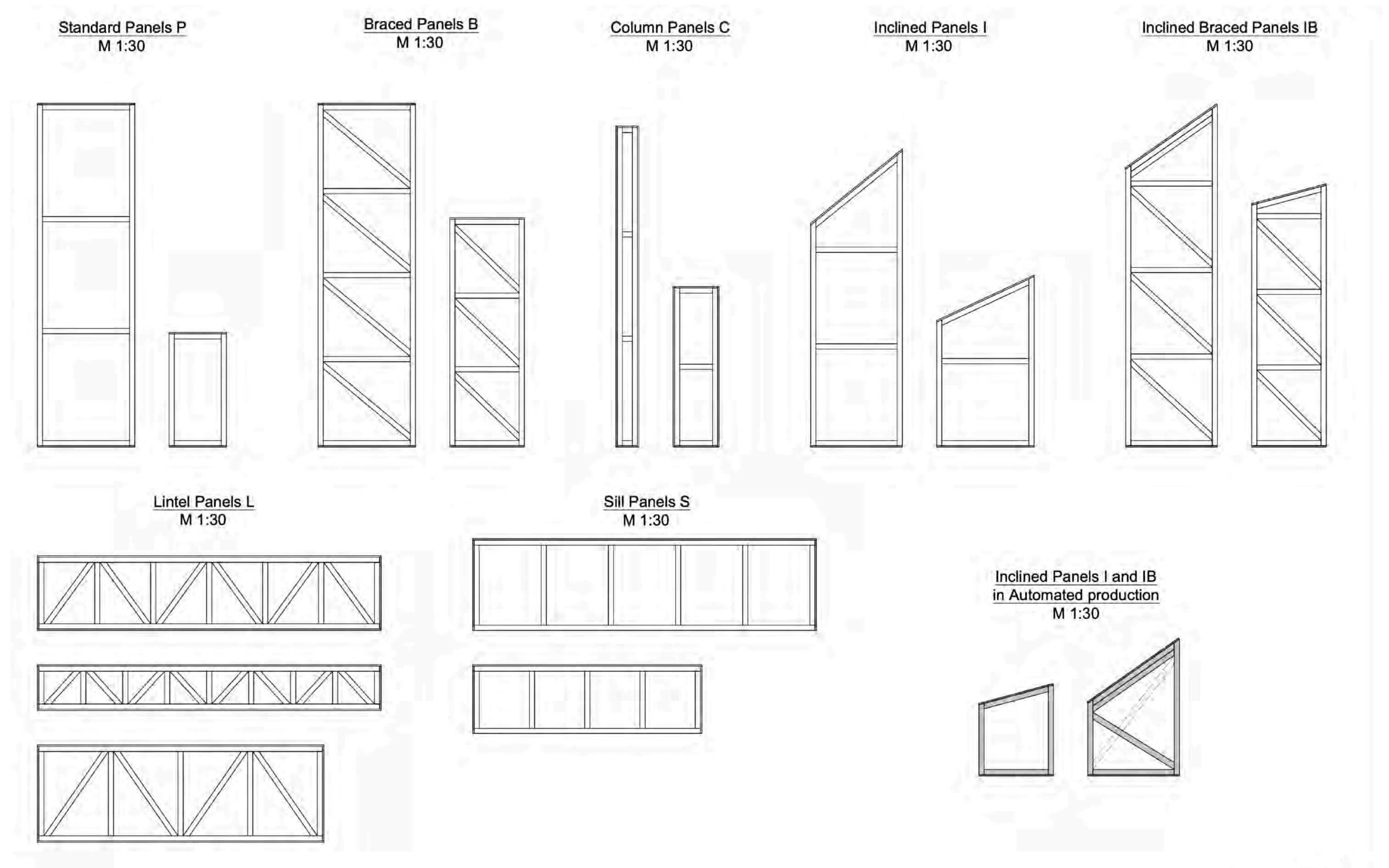
 Lorry/Pack: 01-02
Serial number: 221024/B01-02/01

Date of production: 2022/06/27
EcoCocon, UAB
Gedimino str. 30D, Vilkauskis district, Kybartai, Lithuania
National Technical Approval: NTJ-01-061:2020



Panel types

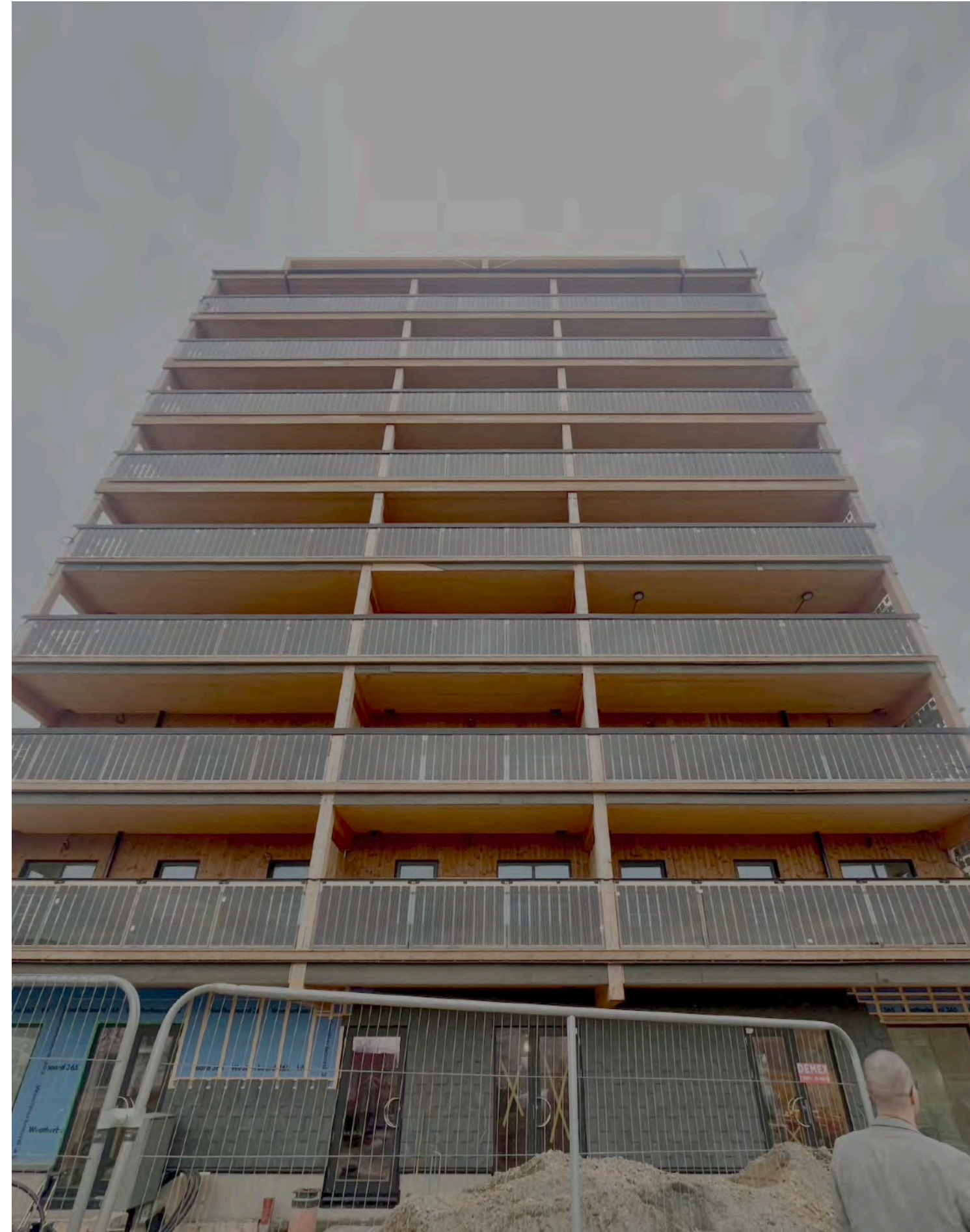
- » 89% pure straw, 11% C24 wood
- » compressed straw infill
- » thickness 400 mm (300 special order)
- » width from 400 to 1200 mm
- » Height 400 to 3000 up to 3 m tall

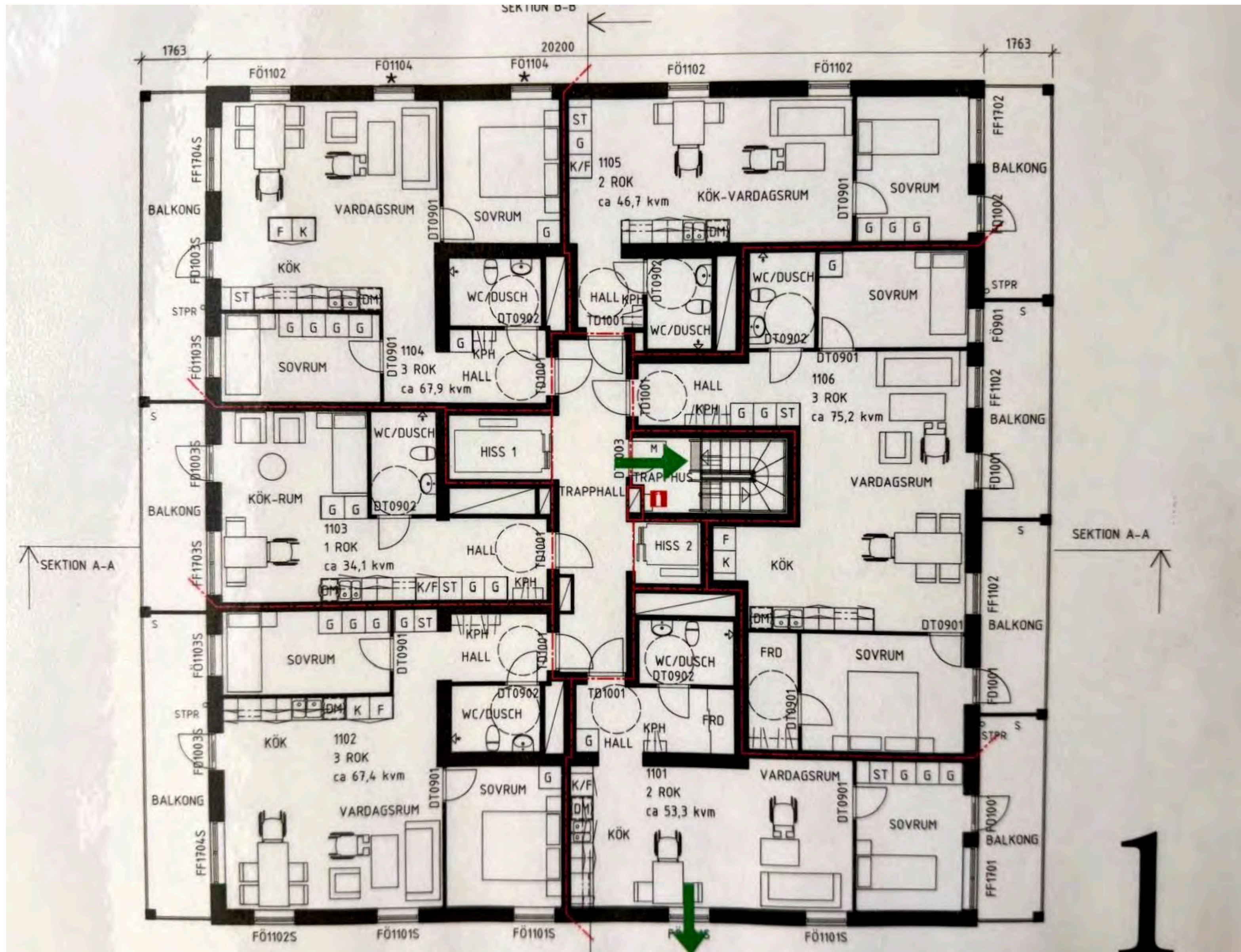






Energy





Building time -

Fire



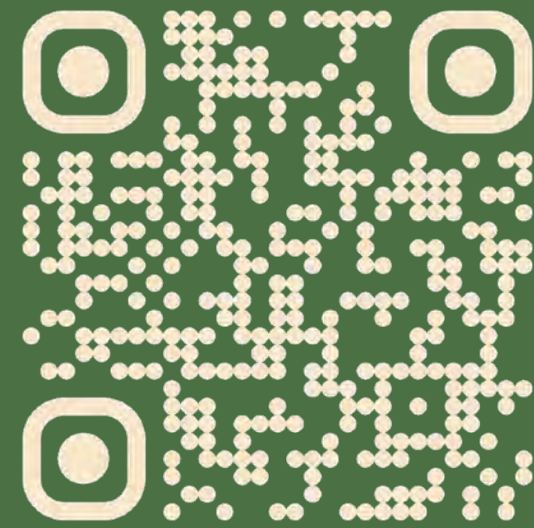


Kiitos

Anna Hjelt

anna@ecococon.eu

+358 40 583 6004



Let's connect
on **LinkedIn** 

Q & A

